



Quick Reference Guide

Last updated January 7, 2010 | For additional information please contact the hotel directly

Four Seasons Hotel Mumbai
114 Dr. E. Moses Road, Worli, Mumbai, 400 018, India
Tel 91.22.2481.8000 | Fax 91.22.2481.8001

www.fourseasons.com/mumbai



114 Dr. E. Moses Road
Worli, Mumbai 400 018, India
Tel 91.22.2481.8000
Fax 91.22.2481.8001

AIRPORTS

- Chhatrapati Shivaji International Airport (BOM): 60 minutes (20 kilometres/12.4 miles)
- Chhatrapati Shivaji International Airport – Domestic Terminal, Santa Cruz : 45 minutes (15 kilometres/9.3 miles)

TABLE OF CONTENTS

- 2 *Introduction*
- 4 *Destination*
- 7 *Conference Facilities*
- 14 *Guest rooms, Suites and Private Residences*
- 19 *Dining*
- 21 *Recreational Facilities*
- 22 *Incentive Activities*
- 24 *Appendix: Conference Chart*

The capital of the state of Maharashtra, Mumbai (formerly Bombay) is India's commercial and financial centre and its busiest port. Colourful and vibrant, the city is a fascinating mix of Indian spiritual traditions, British colonial history, Bollywood glamour and the latest international trends. Cocooned from the whirl of the city, Four Seasons offers sleek sophistication and easy access to all that Mumbai has to offer.



Centrally located in the emerging Worli district, Four Seasons Hotel Mumbai offers convenient access to the financial quarter, the film and television region and many famous sights. An architectural landmark that rises elegantly above the thriving metropolis, Four Seasons is a welcome sanctuary from the bustle of India's most energetic city.

With expansive views of the Arabian Sea, the Mahalaxmi Racecourse and the city skyline, Four Seasons offers 202 extra-large guest rooms and suites, inspired dining, flexible meeting space, a destination spa and health club, an outdoor pool and a full-service

business centre. Bringing renowned Four Seasons standards and service to the Indian subcontinent, the Hotel provides an instinctive choice for the business and leisure traveller.

TRANSPORTATION

Chhatrapati Shivaji International Airport is 20 km (12 miles) and approximately one hour by car from the Hotel, while Santa Cruz Domestic Airport is 15 km (9 miles) and approximately 45 minutes by car from the Hotel. Between the two airports, Mumbai is served by more than 30 international and regional airlines, offering convenient connections to major destinations in Asia, Europe, the Middle East and North America.

Daily non-stop flights are available to New York, London, Paris and Frankfurt, as well as to Abu Dhabi, Doha, Riyadh and other Middle Eastern hubs. Major airlines also schedule daily flights between Mumbai and Singapore, Hong Kong, Shanghai and Tokyo.

To ensure the comfort and enjoyment of guests as they travel to and from the Hotel and the airport, as well as other destinations within Mumbai, the Hotel offers a fleet of BMW 7 Series sedan limousines. The vehicles are equipped with refreshments, a selection of audio CDs, a television and a choice of DVDs. Rental cars can be arranged at the airport, as well as through the Hotel's Concierge. Valet parking and a limousine service are also available.

WEATHER CHART

| Month | °C | | °F | |
|-----------|------------|------------|------------|------------|
| | Highs/Lows | Highs/Lows | Highs/Lows | Highs/Lows |
| January | 30 | / 19 | 86 | / 66 |
| February | 30 | / 20 | 86 | / 68 |
| March | 31 | / 23 | 88 | / 73 |
| April | 32 | / 25 | 90 | / 77 |
| May | 33 | / 27 | 91 | / 81 |
| June | 32 | / 26 | 90 | / 79 |
| July | 30 | / 25 | 86 | / 77 |
| August | 30 | / 25 | 86 | / 77 |
| September | 31 | / 25 | 88 | / 77 |
| October | 33 | / 25 | 91 | / 77 |
| November | 33 | / 23 | 91 | / 73 |
| December | 32 | / 21 | 90 | / 70 |

DESTINATION

Mumbai is a vibrant, bustling city situated along the western coast of India, on the edge of the Arabian Sea. Formerly known as Bombay, the city is made up of seven connected islands and boasts a population that exceeds 13 million; it is among the world's fastest-growing cities. As the business and financial capital of India, all the major financial institutions, banks and stock exchanges are based here. Mumbai is also home to the glamour and intrigue of Bollywood, India's renowned movie industry.

To truly experience Mumbai, all one has to do is wander through the myriad neighbourhoods and markets alive with the sights and sounds of this unique city. This multicultural metropolis is characterised by an eclectic mix of traditional huts and skyscrapers, age-old customs and modern traditions – capturing the spirit of change and diversity that is India today.

From distinctive shopping experiences and exotic dining to an exhilarating afternoon of cricket or sightseeing, Mumbai offers something for everyone. At Four Seasons Hotel Mumbai, with its desirable location in the emerging Worli district, unparalleled service and hospitality will shape your visit to India.

The Hotel's central location allows guests to take advantage of a wide range of excursions and leisure activities. These are best enjoyed when accompanied by a personal guide, which can be arranged by the Concierge.

WEATHER

Located on the shores of the Arabian Sea, Mumbai enjoys tropical weather with minimal seasonal fluctuations. Summer months (March to May) are humid, with temperatures peaking in May. The monsoon arrives around mid-June, and trails off in September. Winter months (November to February) are very pleasant in Mumbai, when the city experiences mild temperatures, balmy conditions and refreshing sea breezes.

LOCAL ATTRACTIONS AND ACTIVITIES

At Four Seasons, you enjoy a unique vantage point from which to explore the sights, sounds and experiences around you. We hope the highlights of local attractions below help simplify your planning. Please let us know how else we can assist you.

Within a 5-minute drive of the Hotel

Haji Ali Mosque:

- At the end of a long causeway, the Haji Ali Mosque and Tomb can only be accessed at low tide. At high tide, the majestic whitewashed complex, which honours a Muslim saint, appears to float above the water, in splendid isolation.

Mahalaxmi Racecourse :

- Races take place every Sunday at Mahalaxmi Racecourse, from November to April. Big races such as the Indian Derby are an important occasion in Mumbai's social calendar. Out of season, the racecourse is popular with walkers and joggers, and horseback rides can be arranged here.

Dhobi Ghats :

- The Dhobi Ghats offer an unforgettable view of a timeless tradition unique to Mumbai.

Around 200 *dhobi* families toil in this open-air laundry – soaking, then pummelling the city's garments, before they are hung out to dry, ironed and returned to residents across the city.

Within a 10-minute drive of the Hotel

Siddhivinayak Temple :

- Siddhivinayak Temple is dedicated to Lord Ganesh, the elephant-headed god of good fortune, and was rebuilt on the site of a 200-year-old temple. It attracts followers from all over India, and it is considered especially auspicious to visit on a Tuesday.

Within a 15-minute drive of the Hotel

Mani Bhavan Gandhi Museum:

- The Mani Bhavan Gandhi Museum is a house that served as the Mumbai headquarters of Mahatma Gandhi from 1917 to 1934. In 1921 he staged a four-day fast here, in order to restore peace to the city. Exhibits in the quiet, three-story home help to explain his legendary life.

Shivaji Park:

- Huge crowds of freedom fighters gathered in Shivaji Park during India's battle for independence. After independence, large rallies of those struggling for a consolidated state of Maharashtra took place here. Since the state's formation in 1960, the park has hosted more peaceful activities. Now considered the cradle of Indian cricket, it has produced numerous international players. Budding cricketers play here every day of the week.

Within a 20-minute drive of the Hotel

Chowpatty Beach and Marine Drive:

- Chowpatty Beach comes alive each evening, with ferris wheels, carousels, pony rides, gymnasts, monkey shows, astrologers and stalls selling Mumbai's famously satisfying fast food, such as crunchy puffed rice snacks and spicy potato cakes. The beach parallels Marine Drive – one of Mumbai's most popular promenades, especially at sunset.

Chor Bazaar:

- Chor Bazaar is Mumbai's famous Thieves' Market. The lively market is an antiques lover's delight. It features an eclectic range of ancient and modern, from old ships' parts to crystal chandeliers and English tea sets. Nearby, Zaveri Bazaar is famous for its diamond, gold and silver jewellery.

Hanging Gardens, Kamala Nehru Park and Parsi Tower of Silence:

- The Hanging Gardens (correctly known as the Pherozeshah Mehta Gardens), Kamala Nehru Park and the Parsi Tower of Silence are all located on Malabar Hill, an exclusive residential area of Mumbai. The formal Hanging Gardens were built in 1880 above a series of reservoirs. Across the road, Kamala Nehru Park offers spectacular views over the city, while the nearby Tower of Silence is where the Parsis perform their last rites.

Within a 30-minute drive of the Hotel

Victoria Terminus:

- Victoria Terminus (now known as Chatrapati Shivaji Terminus) is the headquarters of Central Railways, with a thousand trains leaving the station every day. Architecturally one of the world's finest stations, this magnificent Raj-era monument was completed in 1887, and its features include vaulted roofs, Gothic spires, flying buttresses, exquisite friezes and a massive central dome.

Crawford Market:

- Crawford Market (now known as Mahatma Jyotiba Phule Market) is one of Mumbai's most famous markets, known for its flowers, fish, fresh produce and exotic birds. Reminiscent of Victorian London, it was completed in 1867, and features an interesting blend of Gothic and Moorish architectural styles.

Prince of Wales Museum:

- The Prince of Wales Museum (now known as Chatrapati Shivaji Maharaj Museum) is Mumbai's top museum and arguably the best in India. Offering an extensive and accessible introduction to Indian history and culture, highlights include sculptures of Hindu deities, Buddhist *thangkas* from Nepal and Tibet, more than 2,000 miniature paintings representing India's various schools of art, and ancient Indus Valley artefacts that date back to 2000 BC.

Within a 35-minute drive of the Hotel

Gateway of India :

- The Gateway of India is Mumbai's most famous landmark. The Arc de Triomphe-like structure was completed in 1924, its design influenced by the Muslim architecture of 16th-century Gujarat. The last British troops to leave India passed through the gate in a special ceremony on February 28, 1948.

Within a 1-hour drive of the Hotel

Bollywood:

- Bollywood is home to the world's most prolific movie producers. Special tours can be arranged to Film City, India's largest studio, in Goregaon. Visits take in the studios and recording rooms as well as the numerous venues used for outdoor filming.

Kanheri Caves:

- In the forest of Sanjay Gandhi National Park, the Kanheri Caves provide an intriguing glimpse of Buddhist India. The 109 isolated caves, chiselled out of the volcanic rock between the 1st century BC and the 9th century AD, were used by Buddhist monks for meditation and worship. One of the largest caves features a colossal standing Buddha, 7 metres (23 feet) high, on each side of the entrance, a colonnade of 34 pillars and a huge shrine, all carved from the stone. The whole area features inscriptions in Sanskrit, Devnagri and Brahmi script.

CONFERENCE FACILITIES OVERVIEW

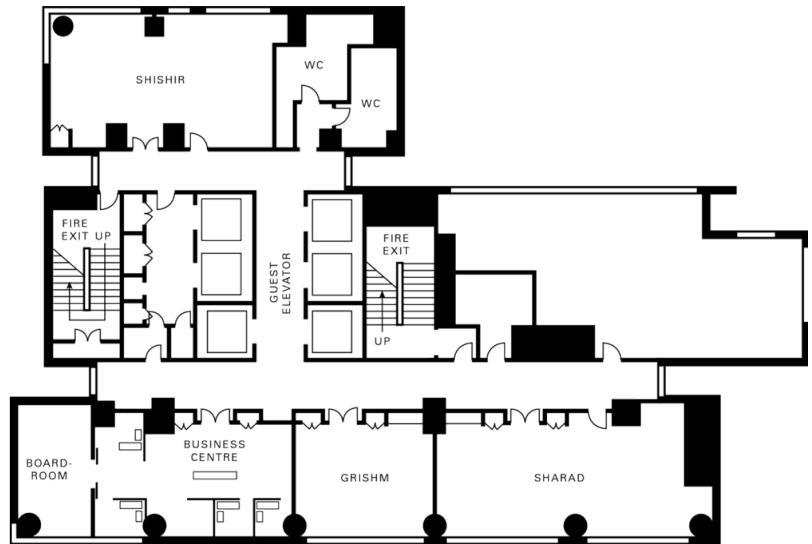
| | |
|------------------------------------|------------------------------------|
| Total Space | 508 m ² 5,468 sq.ft. |
| Largest Ballroom | - |
| Meet and Feed (max. capacity) | 32 |
| Breakouts | 7 |
| Banquet (max. capacity) | 32 |
| Outdoor Banquet (max. capacity) | 40 |
| Private Dining (max. capacity) | 32 |

CONFERENCE FACILITIES

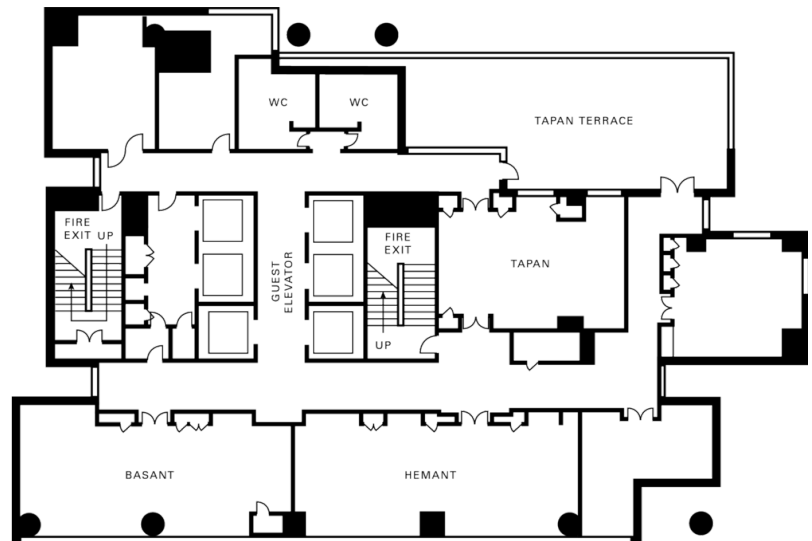
The undisputed choice for the area's most important events, Four Seasons Hotel Mumbai currently accommodates functions of up to 70 people. Its more than 508 square metres (5,468 square feet) of elegant indoor meeting and conference space on the second and sixth floors includes a terrace and six distinctive function rooms bathed in natural sunlight from floor-to-ceiling windows. Their contemporary décor includes mahogany furnishings and plush wool carpets accented by warm tones and modern artwork, with state-of-the-art audiovisual systems. In addition, 611 square metres (6,577 square feet) of dedicated gardens and lawns, including the pool terrace, is available for pre-function cocktails, casual al fresco dining and other memorable outdoor events.

All rooms are equipped with full technological support, such as high-speed Internet access and automated blackout shutters. Offering an unrivalled level of meeting expertise, Four Seasons support is always on site, ready to respond promptly to every need.

6th Floor



2nd Floor



TECHNICAL ASSISTANCE

All of the Hotel's meeting spaces are fully equipped to support the most demanding presentation and communication requirements, with advanced lighting, AV and staging capabilities. Telecommunications and electrical hook-ups are designed to meet or exceed industry standards. Voltage is 230.

State-of-the-art audiovisual equipment includes:

- Lecterns with light and sound control
- Dedicated telephone lines (available on request)
- Motion picture projectors, slide projectors and overhead projectors
- Mono, stereo and multi-track tape recorders
- Video cameras, video projectors and video players
- Multi-image dissolve units and programmers
- Personal computers
- Wired or wireless Internet access

MUSIC AND ENTERTAINMENT

Our team of conference and banqueting specialists will arrange music and entertainment to complement any part of your function or event. Our in-house DJ will be delighted to cater to your requirements.

RECEIVING AND MAINTENANCE

The Hotel features a full-service shipping and receiving office. All packages should be sent to the attention of the Catering Manager along with the conference name and date. Limited space is available for the storage of large items. Please time shipping to the dates of your arrival.

Receiving dock

Please contact the Catering Manager for special arrangements for delivery of oversized packages or environmentally sensitive equipment.

Maintenance

The Engineering Department is available 24 hours a day for general assistance with lighting, room temperature control and minor repairs.

Post-conference shipping

Shipping of post-conference materials may be coordinated through your Catering Manager.

DESTINATION MANAGEMENT

Our conference and banqueting specialists can help accommodate your group's special requests. For detailed information, please contact the Hotel directly. In addition, we recommend the following destination management companies:

Abercrombie & Kent India Pvt. Ltd.
B-6, Plot #20, Local Shopping Centre
Safdarjung Enclave
New Delhi
Tel: 91 (11) 2617-8418
Fax: 91 (11) 2618-5056

Destinations Of The World (Sub Continent) Pvt. Ltd.

G-1, Silver Line Apartments

J. B. Nagar, Andheri East

Mumbai

Tel: 91 (22) 2820-6161

Fax: 91 (22) 2820-6182

BUSINESS SERVICES

Four Seasons can help you with business services support through the Business Centre, located on the 6th floor. For entertainment or travel arrangements, our resourceful, multilingual Concierge is ready to assist, around the clock.

- 24-hour business services
- Airline reservation service
- Audiovisual equipment
- Cellular telephones
- Digital cameras
- Express check-in/check-out
- International newspapers
- Laptops
- Secretarial service
- Translation and interpretation service
- Wired or wireless Internet access
- Worldwide courier service

SPOUSE PROGRAMMES

The Hotel offers a variety of activities of interest to spouses of meeting participants. The Concierge will provide detailed information on specially tailored spouse programmes, including the following:

- A day at the spa
- Cooking demonstration at the Chef's Table
- Guided tour of Crawford Market with a Four Seasons chef
- A tea appreciation and sari-tying session
- A Bollywood dance performance and class
- A yoga awakening session
- City tour of temples, mosques and churches
- Bollywood Film Studio Tour
- Cruise to Elephanta Island
- An afternoon cricket match
- An afternoon at the Mahalaxmi Racecourse

CHILDRENS AND FAMILY PROGRAMMES

Four Seasons Hotel Mumbai offers a perfect base for families visiting the area, and extends an especially warm welcome to its young guests, from serving milk and cookies on arrival to providing special gifts such as colouring books and crayons, sweat shirts, T-shirts or a chocolate treat, videos, board games, books and toys. Complimentary items include bottles and toiletries for infants, high chairs, child-size terry bathrobes, strollers and bottle warmers.

Babysitting services may be arranged through the Concierge. Children's menus are

available in the restaurant and through In-Room Dining, with careful attention paid to providing nutritionally balanced meals.

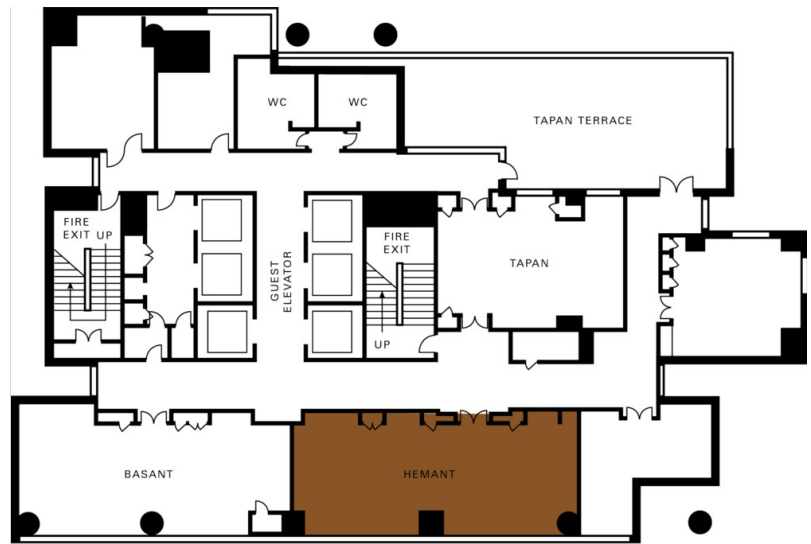
In addition, the Concierge will advise on activities to create special memories for the entire family. Possibilities range from a trip to Chowpatty Beach, a tour of Bollywood or weekend excursions to destinations throughout India.

HEMANT

| | |
|------------|----------------------|
| Dimensions | 6.7 x 13 m |
| | 21.8 x 42.6 ft |
| Size | 86.45 m ² |
| | 930.54 sq.ft. |
| Height | 3.3 m |
| | 10.8 ft |

Capacities

| | |
|----------------|----|
| Classroom | 30 |
| U Shape | 24 |
| Theatre | 70 |
| Reception | 50 |
| Banquet Rounds | 40 |
| Boardroom | 30 |

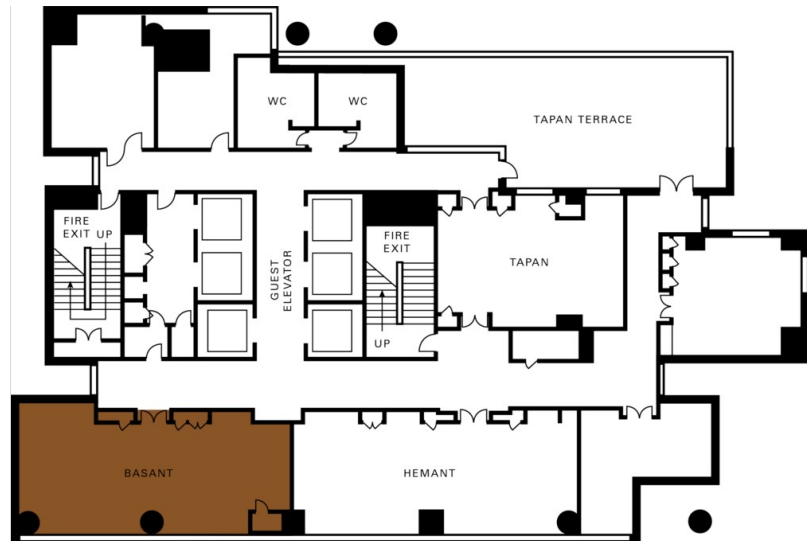


BASANT

| | |
|------------|-------------------|
| Dimensions | 6.7 x 14.1 m |
| | 21.8 x 46.4 ft |
| Size | 94 m ² |
| | 1,012.1 sq.ft. |
| Height | 3.3 m |
| | 10.8 ft |

Capacities

| | |
|----------------|----|
| Classroom | 24 |
| U Shape | 22 |
| Theatre | 60 |
| Reception | 40 |
| Banquet Rounds | 30 |
| Boardroom | 25 |

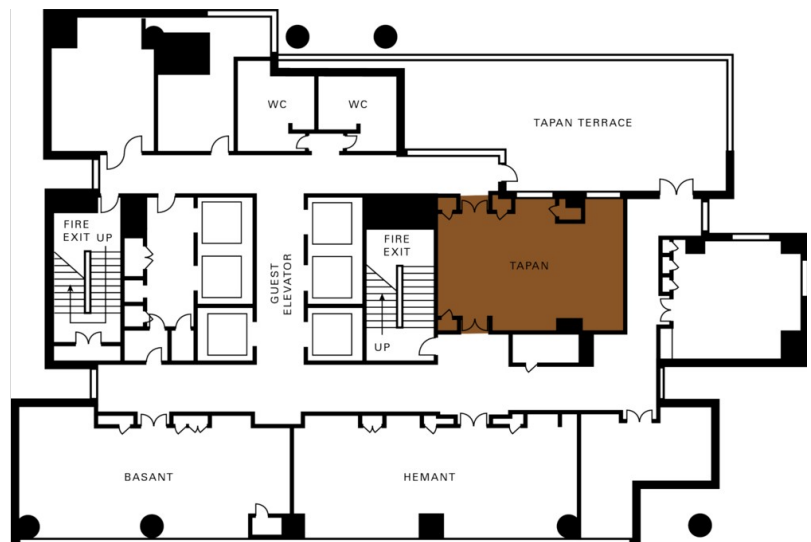


TAPAN

| | |
|------------|---------------------|
| Dimensions | 6.7 x 8.7 m |
| | 21.8 x 28.5 ft |
| Size | 57.9 m ² |
| | 622.8 sq.ft. |
| Height | 3.3 m |
| | 10.8 ft |

Capacities

| | |
|----------------|----|
| Classroom | 16 |
| U Shape | 22 |
| Theatre | 30 |
| Reception | 25 |
| Banquet Rounds | 20 |
| Boardroom | 12 |

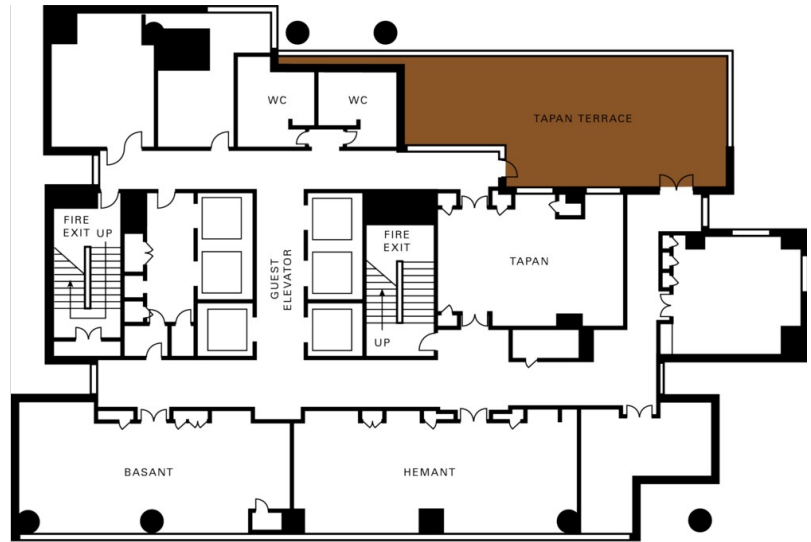


TAPAN TERRACE

Dimensions 10.3 x 5.7 m
33.7 x 18.8 ft
Size 58.8 m²
632.8 sq.ft.
Height -
-

Capacities

Reception 40
Banquet Rounds 30

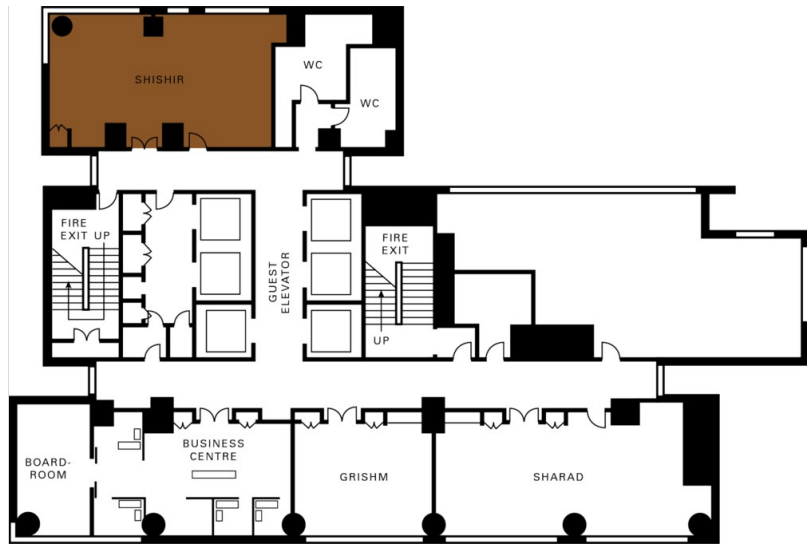


SHISHIR

Dimensions 10.9 x 6.5 m
35.8 x 21.3 ft
Size 66.4 m²
714.8 sq.ft.
Height 2.6 m
8.5 ft

Capacities

Classroom 20
U Shape 20
Theatre 40
Reception 35
Banquet Rounds 30
Boardroom 18



SHARAD

Dimensions 12.2 x 6.4 m
39.9 x 21.1 ft
Size 78 m²
839.8 sq.ft.
Height 2.6 m
8.5 ft

Capacities

Classroom 20
U Shape 20
Theatre 30
Reception 30
Banquet Rounds 20
Boardroom 15

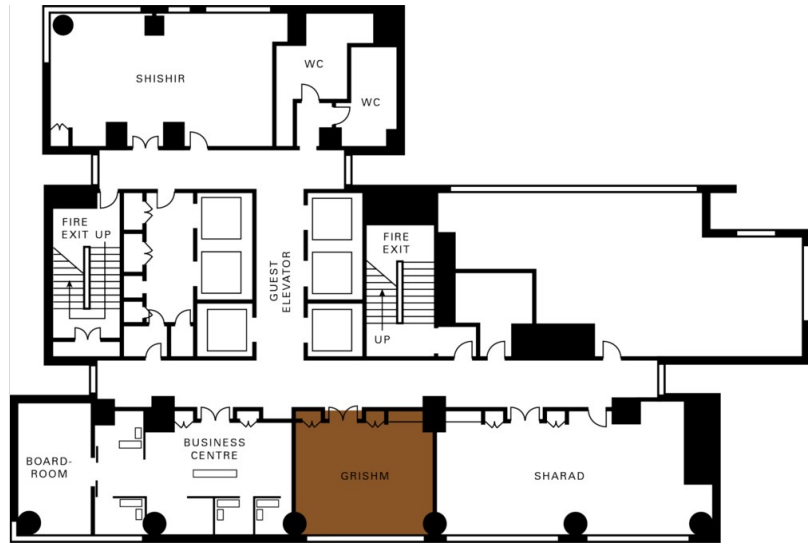


GRISHM

Dimensions 6.6 x 6.4 m
21.6 x 21.1 ft
Size 39.3 m²
423.3 sq.ft.
Height 2.6 m
8.5 ft

Capacities

Boardroom 10



GUEST ROOMS, SUITES AND PRIVATE RESIDENCES OVERVIEW

Located on floors 7 to 32 of the 33-storey hotel, Four Seasons Hotel Mumbai offers 202 generously proportioned guest rooms and suites, many with Arabian Sea views. Their sense of exclusivity is enhanced by having no more than eight rooms to a floor. Blending sleek high-tech with accents of India, interiors feature a mix of gleaming mahogany and maple, rich fabrics, warm tones of beige and green, plush wool carpets and comfortable furnishings.

Modern comforts and high-speed connectivity include wired/wireless high-speed Internet access and an LCD television and DVD player. Spacious Italian marble bathrooms incorporate signature Four Seasons features such as a deep soaking tub and separate glass-walled rain shower.

| Room Category | # | Beds | Size (m ²) | View (sq ft) | |
|--------------------------------|-----|------------------|---------------------------|-----------------|--|
| - Four Seasons Executive Suite | 20 | 1 King or 2 twin | 88 | 947 | Mumbai's skyline and Mahalaxmi Racecourse |
| - Premier Room | 22 | 1 King | 55 | 592 | Mumbai's skyline |
| - Deluxe Room - Sea View | 101 | 1 King or 2 twin | 49 | 527 | Arabian Sea |
| - Deluxe Room | 22 | 1 King or 2 twin | 49 | 527 | The city and Mumbai's skyline |
| - Superior Room | 33 | 1 King | 36 | 388 | The city |
| - Presidential Suite | 1 | 1 King | 310 | 3,336 | Arabian Sea, Mumbai's skyline and Mahalaxmi Racecourse |
| - Premier Suite | 1 | 1 King | 260 | 2,798 | Arabian Sea, Mumbai's skyline and Mahalaxmi Racecourse |
| - Deluxe Suite - Sea View | 2 | 1 King | 101 | 1,087 | Arabian Sea and Mumbai's skyline |

Guest Room Overview

With floor-to-ceiling windows overlooking the Arabian Sea, cityscapes, Mumbai's skyline and Mahalaxmi Racecourse, Four Seasons guest rooms are bright and spacious. Their warm ambience is enhanced by panelled walls and rich silk and mohair accessories. Superior Rooms are on the lower floors, while Deluxe Rooms are on most floors, many with expansive sea views. More spacious Premier Rooms are found on the upper floors. Providing greater privacy for business or entertaining, Four Seasons Executive Suites are corner units located throughout the Hotel.

Suites Overview

On the uppermost floors, four suites – with one- to three-bedroom options available – add privacy and comfort. The one-bedroom Deluxe Suites feature spectacular Arabian Sea views from a large window in the marble bathroom. On the 31st floor, the spacious two-bedroom Premier Suite offers dining for eight and a cosy sitting area in the master bedroom. The 32nd-floor Presidential Suite encompasses three bedrooms, a dining room for eight, a fully equipped kitchen, a study and panoramic vistas across the sea and the Mumbai skyline.

FOUR SEASONS EXECUTIVE SUITE

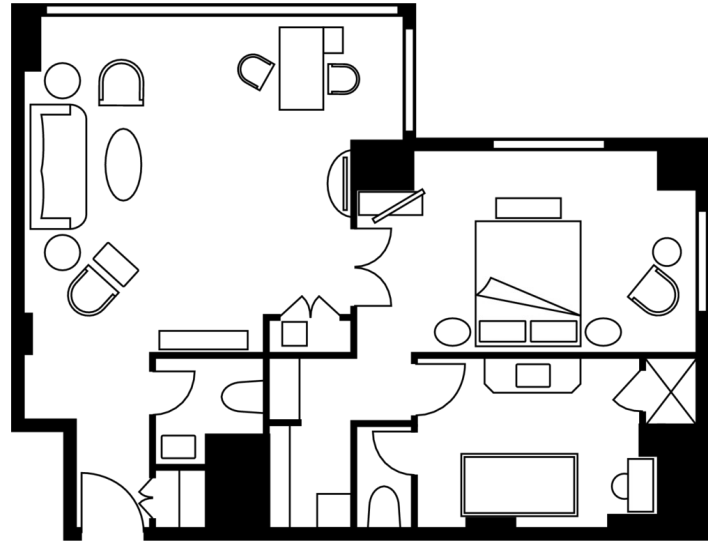
Number 20
Beds King or two twin beds
Size 88 m²
947 sq ft

Location

7th to 30th floors

View

Mumbai's skyline and Mahalaxmi
Racecourse



PREMIER ROOM

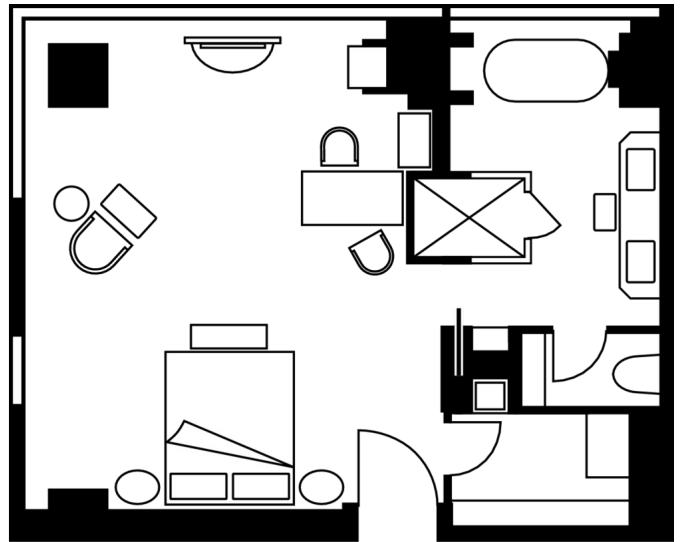
Number 22
Beds King bed
Size 55 m²
592 sq ft

Location

21st to 32nd floors

View

Mumbai's skyline



DELUXE ROOM - SEA VIEW

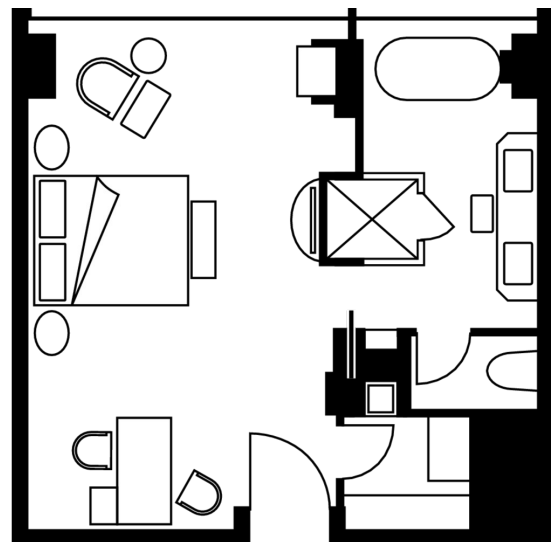
Number 101
Beds King or two twin beds
Size 49 m²
527 sq ft

Location

7th to 32nd floors

View

Arabian Sea



DELUXE ROOM

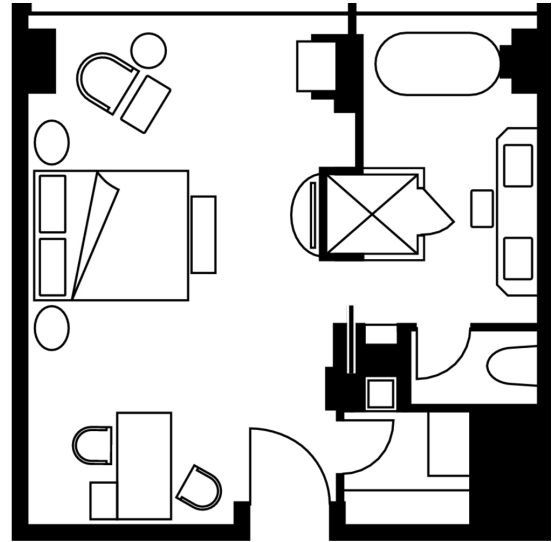
Number 22
Beds King or two twin beds
Size 49 m²
527 sq ft

Location

7th to 32nd floors

View

The city and Mumbai's skyline



SUPERIOR ROOM

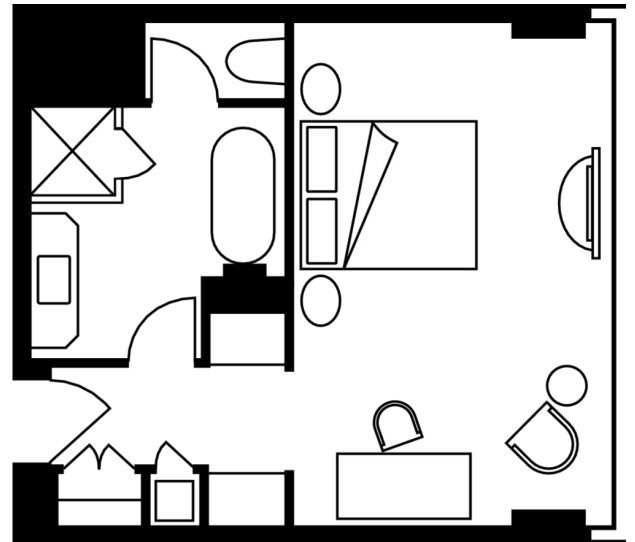
Number 33
Beds King bed
Size 36 m²
388 sq ft

Location

7th to 19th floors

View

The city



PRESIDENTIAL SUITE

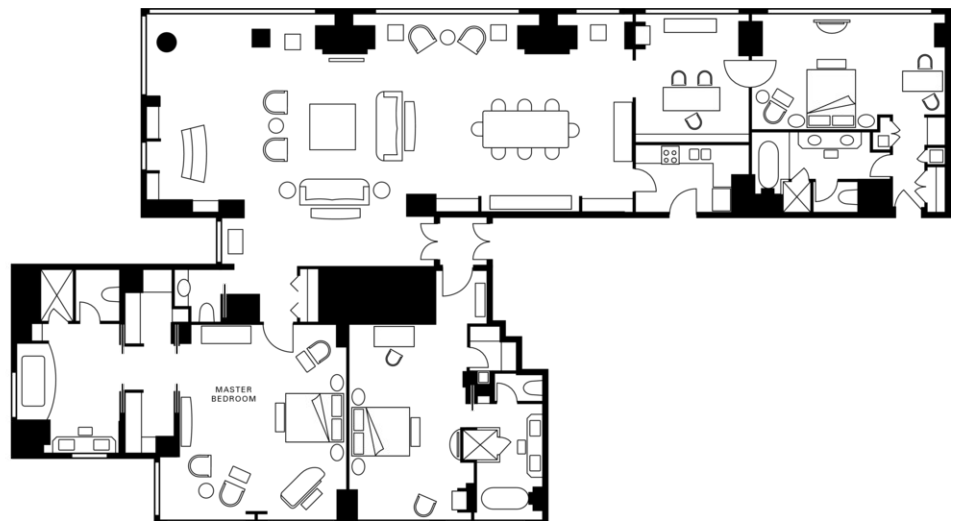
Number 1
Beds King bed
Size 310 m²
3,336 sq ft

Location

32nd floor

View

Arabian Sea, Mumbai's skyline and
Mahalaxmi Racecourse



PREMIER SUITE

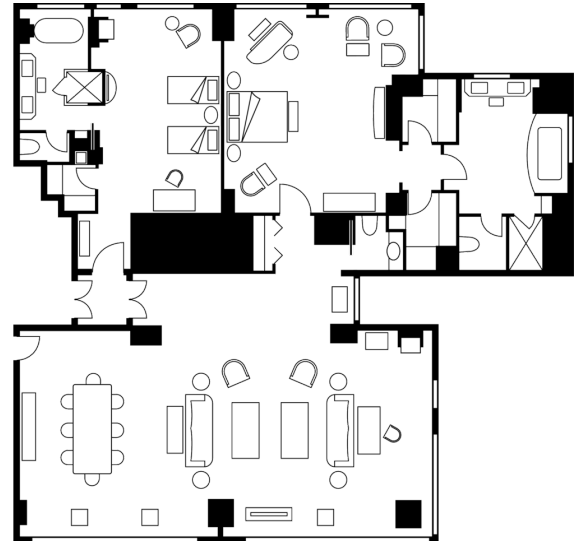
Number 1
Beds King bed
Size 260 m²
2,798 sq ft

Location

31st floor

View

Arabian Sea, Mumbai's skyline and
Mahalaxmi Racecourse



DELUXE SUITE - SEA VIEW

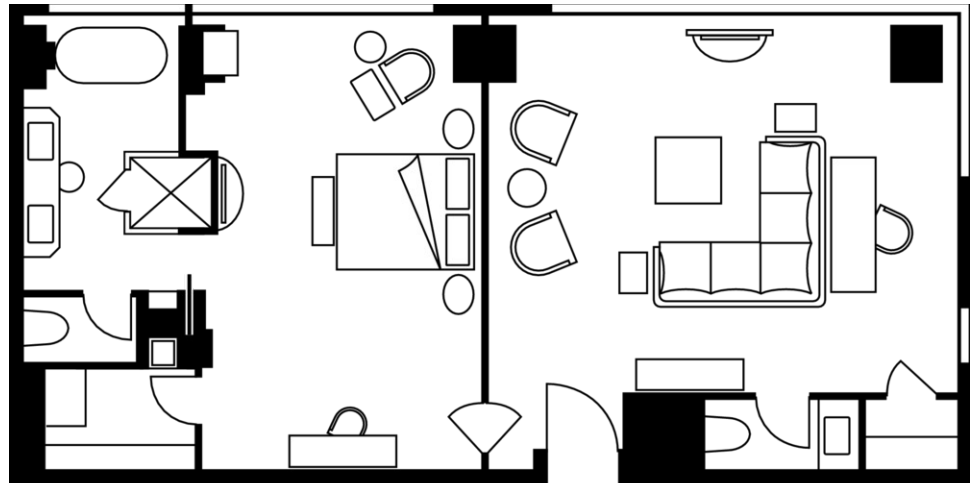
Number 2
Beds King bed
Size 101 m²
1,087 sq ft

Location

30th and 31st floors

View

Arabian Sea and Mumbai's skyline



AMENITIES

- Clock radio
- Down duvets
- Down pillows
- DVD player
- Fax machine on request
- Hair dryer
- Hypo-allergenic pillows on request
- In-room safe
- Lighted make-up/shaving mirror
- Multi-line telephone(s) with voicemail
- Refrigerated private bar
- Satellite television
- Tea/coffee maker
- Thick terry bathrobes
- Twice-daily housekeeping service
- Wired high-speed Internet access

GUEST SERVICES

- 24-hour In-Room Dining
- 24-hour laundry/dry-cleaning/pressing
- 24-hour multilingual Concierge
- Airport transfers
- CD/DVD library
- Complimentary local newspapers
- Complimentary overnight shoeshine
- Doctor or nurse on call 24 hours
- Helicopter service
- Limousine service
- Non-smoking rooms
- One-hour pressing
- Private dining room
- Restaurant
- Salon services
- Same-day laundry/dry-cleaning/pressing
- Self-parking
- Services and amenities for younger guests
- Valet parking

VIP GIFTS AND WELCOME AMENITY

Special arrangements can be made for clients to purchase welcome amenities for their important guests. The Concierge will be happy to assist in these arrangements. Possibilities range from deluxe fruit baskets to a Four Seasons Hotel Mumbai spa treatment. Four Seasons Gift Cards are also available for purchase.

DINING HOURS OF OPERATION

café PRATO & Bar

| | |
|------------------|---------------------|
| Breakfast | 6:30 am - 11:00 am |
| Lunch and Dinner | 11:30 am - 11:00 pm |
| Supper | 11:00 pm - 6:00 am |
| Sunday brunch | 12:30 pm - 4:00 pm |

Pool Deck

| | |
|-----------|--------------------|
| Breakfast | 7:00 am - 11:00 am |
| Snacks | 11:00 am - 7:00 pm |

San-Qi

| | |
|--------|--------------------|
| Lunch | noon - 3:00 pm |
| Dinner | 7:00 pm - midnight |

Aer

| | |
|-----------|-------------------|
| Every day | 5:30 pm - 1:30 am |
|-----------|-------------------|

In-Room Dining

| | |
|------------------|---------------------|
| Breakfast | 6:00 am - 11:00 am |
| All-day dining | 11:00 am - 11:00 pm |
| Overnight dining | 11:00 pm - 6:00 am |

DINING

Reflecting internationally recognised Four Seasons standards for exceptional service and cuisine, Four Seasons Hotel Mumbai offers the area's most sought-after dining experience in sophisticated yet casual surroundings. Imaginative menus are the focus of Four Seasons – from inspiring Italian cuisine and al fresco dining in *café PRATO & Bar* to pan-Asian cuisine in *San Qi*, where three private dining rooms offer privacy for small groups of up to 10 people. Guests can also enjoy In-Room Dining, 24 hours a day.

RESTAURANTS

café PRATO & Bar

café PRATO & Bar brings the flavours of Italian, Mediterranean and Indian cuisine to the lobby level of the Hotel. High ceilings and floor-to-ceiling windows on two sides of the restaurant flood the interior with light, creating a bright, comfortable setting for business meetings and social occasions.

Breakfast is served daily, with Continental, international and regional favourites including delicious birchermuesli and soft, fluffy idlis (steamed rice cakes). The daily antipasti lunch buffet and thoughtfully selected all-day à la carte dishes, including pizzas and pastas, contemporary main dishes, kathi rolls, home-style curries and kebabs, are perfectly suited for a quick business lunch or a relaxed afternoon bite with friends. In the evening, candles and lanterns transform *café PRATO & Bar*, creating a warm atmosphere for enjoying a casual dinner. Not to be missed are the expertly prepared martinis and cocktails and the eclectic selection of wines.

Sunday brunch at *café PRATO & Bar* brings families and friends together for an afternoon of dining and relaxation. It's an intimate gathering with a something-for-everyone ethos in air-conditioned comfort or an al fresco garden setting. Pick and mix international favourites – from roasts to homemade pasta, shabu shabu to foie gras – and choose from free-flowing wines and beers, freshly squeezed exotic juices and smoothies. Catch up with old friends while your children make new ones in their own party tent, complete with BMW toy car races and a popcorn stand. Or just kick back and enjoy our DJ's electric blend of percussive jazz-funk, mellowed with a few cocktails from the vodka and martini bar.

- Cuisine: Italian and Mediterranean
- Indoor seating: 60

Pool Deck

The open-air pool deck offers al fresco breakfast for early risers and a refreshing relief from Mumbai's buzz throughout the day. Guests may enjoy salads and gourmet sandwiches, a selection of chilled seafood and other light snacks, accompanied by delicious fruit drinks and cocktails.

- Outdoor seating: 38

San-Qi

San-Qi (the three energies) pulsates with the spirit of new Asia, offering an energetic dining experience that takes guests on an eclectic culinary adventure through some of the most popular cuisines of the East – Japanese, Chinese, Thai and Indian. Sleek and contemporary, with accents of glass and natural woods, this food theatre/restaurant features the best of Asian dining, accompanied by a hip wine bar, trendy world music and new Indian jazz.

- Cuisine: Japanese, Chinese and Indian
- Indoor seating: Seats 180, including 30 in private dining rooms

LOUNGES

Aer

Marvel at the panoramic city and sea views and the endless ceiling of sky and stars at Aer, Mumbai's highest rooftop bar. Covering the entire roof of Four Seasons Hotel Mumbai, this 34th floor open-air lounge creates an atmosphere of chic relaxation high above the bustling streets of Worli.

Dining is equally inspiring, with the emphasis on shared plates featuring an innovative selection of hot and cold Lebanese and Middle Eastern dips, Mediterranean tapas and other international favourites. Enjoy evening cocktails and midnight mezzes as well as exclusive – even personalised – blends of fresh fruit and champagne alongside an eclectic menu of wine and champagne by the glass. During the sunset hours of 5:30 pm to 8:00 pm each evening, cocktails and champagne are reduced to around half price. A live DJ playing nightly sets adds to the high-energy feel in this modern Indian lounge.

- Cuisine: Mediterranean and Lebanese tapas
- Outdoor seating: 80

RECREATION FACILITIES

Within Mumbai's colourful commotion, celebrate the serenity of Four Seasons. In a sleekly modern tower, surrender to spa treatments inspired by India's ancient healing traditions matched with Western rituals of rejuvenation. Morning awakening and evening enlightenment sessions are conducted by the Hotel's resident yogi. The state-of-the-art health club is open around the clock, while the landscaped terrace around the outdoor pool invites tranquil lounging. For guests wishing to play at one of India's most highly rated golf courses, the Four Seasons Concierge can make all the arrangements for a game at Bombay Presidency Golf Club.

SPA SERVICES

The Spa at Four Seasons Hotel Mumbai is a haven of calm and rejuvenation, where Indian philosophies meld with Western sensibilities and the pace of Mumbai slows. Retreat to one of eight treatment rooms, including two spacious suites – Natrajasana and Vajrasana – that function as private spas, allowing for hours of uninterrupted escapism. Discover modern ayurvedic-inspired therapies in a setting of contemporary sophistication. Experience the regenerative power of aromatic and medicinal herbs, spices and flowers imbued with the healing touch of skilful therapists. Revitalise the senses through a combination of aquatherapy rituals in the Vitality Lounge. Or just lie back, close your eyes and enjoy the soothing sense of stillness in the Relaxation Room.

The two-storey Spa encompasses the third and fourth floors of the Hotel and includes a hair salon by Italian stylist Rossano Ferretti. On the third floor, the spa reception area welcomes guests to the Spa.

- Number of treatment rooms: 8

FITNESS FACILITIES

Re-invigorate at the Hotel's spacious health club, with its state-of-the-art cardiovascular and strength training machines. Relax in the juice bar and melt away tension in the steam rooms. Or uplift and enlighten the body, mind and spirit in daily awakening sessions with the resident yoga guru.

- Size: 314 m² / 3,380 sq ft

POOL

The Hotel's outdoor swimming pool, set amidst lush landscaping, offers a serene respite from the city. Guests can also unwind on chaises longues beside the relaxation pool near the open-air pool deck, where light snacks and beverages are served. For added convenience, the pool is equipped with telephones and wireless Internet access.

GOLF

Bombay Presidency Golf Club

This golf club was first built in 1827. Redesigned by Peter Thompson, it is now a par-70, 18-hole, 6,223/5,463-yard international standards course, with fairways and greens that are rated amongst the finest in India. Its 45 wooded hectares (110 acres) present a multitude of challenges, including an "elephant pit."

INCENTIVE ACTIVITIES

Discover a vibrant metropolis where ancient civilisation meets high tech and traditional culture mingles with modern experiences. Four Seasons Hotel Mumbai is pleased to help customise an itinerary for your group. The following is a sample group itinerary – we invite you to discuss your needs with us.

Sample itinerary

| | |
|-------|---|
| Day 1 | <p>Arrival at Hotel After check-in at the Hotel, relax and unwind.</p> <p>Evening</p> <ul style="list-style-type: none">• Enjoy a poolside barbecue dinner, with a scrumptious array of Indian tandoori kebabs, Thai satays and continental grills. |
| Day 2 | <p>Morning Four Seasons breakfast at café PRATO & Bar, our Italian restaurant.</p> <ul style="list-style-type: none">• Join a half-day city tour of Mumbai - witness early morning activities at Dhobi Ghaat, the world's largest outdoor laundry; visit the ornate Victoria Terminus; Gateway of India; Prince of Wales Museum; Marine Drive (Queen's Necklace); Hanging Gardens; and Mani Bhavan, a museum dedicated to the life and work of Mahatma Gandhi.• On the way back, see the bustling and colourful Crawford Market; Mahalaxmi Temple; and the beautiful Haji Ali Mosque, built 457 metres (500 yards) into the sea. <p>Afternoon</p> <ul style="list-style-type: none">• Enjoy lunch at the Hotel's contemporary Asian restaurant, San-Qi, where you may choose from Japanese, Chinese, and Indian cuisines.• Spend an afternoon being pampered in the spa, invigorate with an aquatic workout in the Hotel pool or simply relax with a refreshing drink at poolside. <p>Evening</p> <ul style="list-style-type: none">• A Lucknowi-themed dinner will make the evening memorable - with fine local delicacies, elaborate ethnic decorations, cultural dances and interesting handicraft stalls. |
| Day 3 | <p>Morning</p> <ul style="list-style-type: none">• Join a one-hour yoga class, led by the Hotel's resident yoga guru.• Enjoy a breakfast buffet of healthy, holistic foods, then get tips from the chef on how to prepare a nutritious meal. <p>Afternoon</p> <ul style="list-style-type: none">• Lunch and shop at Phoenix Mills, Atria Mall (for international brands) and Dadar Hindmata Market (for ethnic Indian fashion).• Watch horse racing at the Turf Club (weekends only, from November to April).• Attend an interactive cooking class taught by the Hotel's chef, who excels in the culinary arts of India, Thailand, Japan, China and Italy. <p>Evening</p> <ul style="list-style-type: none">• Dine in a movie set - the backdrop of a Bollywood-themed dinner, |

complete with performances and a henna artist.

Day 4

Morning

Enjoy a traditional South Indian breakfast before your departure.

www.fourseasons.com/mumbai

| Rooms | Dimensions | | Size | | Height | | Classroom | Hollow square | U-shape | Theatre | Reception | Banquet rounds | Conference/ boardroom |
|-----------------|------------|-------------|-------------------|---------|--------|------|-----------|---------------|---------|---------|-----------|----------------|-----------------------|
| | (m) | (ft) | (m ²) | (sq ft) | (m) | (ft) | | | | | | | |
| - Hemant | 6.7 x 13 | 21.8 x 42.6 | 86.45 | 930.54 | 3.3 | 10.8 | 30 | - | 24 | 70 | 50 | 40 | 30 |
| - Basant | 6.7 x 14.1 | 21.8 x 46.4 | 94 | 1,012.1 | 3.3 | 10.8 | 24 | - | 22 | 60 | 40 | 30 | 25 |
| - Tapan | 6.7 x 8.7 | 21.8 x 28.5 | 57.9 | 622.8 | 3.3 | 10.8 | 16 | - | 22 | 30 | 25 | 20 | 12 |
| - Tapan Terrace | 10.3 x 5.7 | 33.7 x 18.8 | 58.8 | 632.8 | - | - | - | - | - | - | 40 | 30 | - |
| - Shishir | 10.9 x 6.5 | 35.8 x 21.3 | 66.4 | 714.8 | 2.6 | 8.5 | 20 | - | 20 | 40 | 35 | 30 | 18 |
| - Sharad | 12.2 x 6.4 | 39.9 x 21.1 | 78 | 839.8 | 2.6 | 8.5 | 20 | - | 20 | 30 | 30 | 20 | 15 |
| - Grishm | 6.6 x 6.4 | 21.6 x 21.1 | 39.3 | 423.3 | 2.6 | 8.5 | - | - | - | - | - | - | 10 |